



# WAIKŌWHAI PROGRESS UPDATE WINTER 2024

## KIA ORA!

We are well and truly into winter, which has brought crisp mornings, cosy nights, and the latest edition of the Waikōwhai neighbourhood newsletter!

This issue has all the latest community news and neighbourhood progress updates, heartwarming pictures of recent community Matariki celebrations, and a chat with Rosita Ekeroma, Team Leader for the Tenant Rehousing team at Kāinga Ora.

So, pop the heater on, kick your feet up, and dive into all the latest news from Waikōwhai!



## MATARIKI MAGIC IN MOUNT ROSKILL

*From the summit of Puketāpapa to the food forest at Molley Green Reserve, Matariki celebrations shone across Mount Roskill.*

*As residents across the motu welcomed in the Māori New Year, the team from Kāinga Ora joined to celebrate and show support at several events and get togethers.*

### Puketāpapa Manu Aute Kite Day

With more than 7,000 people and whānau attending this annual event, the Roskill Development and Kāinga Ora teams joined in on the activities and workshops. Attendees enjoyed kite flying and games, waiata and kapa haka. More than 500 people also stopped by the Kāinga Ora stall to talk about the new infrastructure and homes coming under Roskill Development.

“It was great to see the community really getting into the Matariki spirit,” says Karla Beazley, Kāinga Ora Community Development Coordinator. “We received lots of positive messages about how nice the new homes are looking and how our communities are growing.”

### Whakanuiaa Matariki

Over at the Wesley Community Centre’s Youth Zone, it was time for star-making, temporary Māori tattoos, kai and performances from a range of cultures. About 300 people got involved, with local kuia and kaumatua sharing their wisdom about Matariki and Māori culture. The Kāinga Ora team were there to support, leading more than 80 people in star-making sessions.

“There were lots of thanks to the staff for their kindness in teaching and explaining the meaning behind star-making,” says Karla. “Especially from people across the range of cultures who joined us.”

“This was a really special event, and it’s all thanks to the work of our local community partners for bringing everything together in true Matariki style.”

### Matariki at the Māra

It was all about fresh and healthy kai during Matariki at the Māra, as people learned how to build a traditional tāpapa, or seed beds for growing kūmara.

Held at Molley Green Reserve’s māra kai (community garden), attendees also planted native trees while tamariki, rangatahi and the whole whānau got creative with crafts, chalk drawing and face painting.

People brought kai to share and organisers from Roskill South Hub, Puketāpapa Climate Action and Friends of Molley Green Reserve cooked fry bread, a boil-up and other treats.

Kelly Francis, the founder of Whenua Warrior, was there to teach attendees about traditional techniques for indigenous food, including growing kūmara from tipu (shoots).

Molley Green Reserve is currently being upgraded by Kāinga Ora and civil construction partners LEAD Alliance, including daylighting Te Auaunga (Oakley Creek) as it flows through the reserve, restoring it to a more natural state.

# WAIKŌWHAI NEIGHBOURHOOD PROGRESS UPDATE

## Stage 1

Construction of Kāinga Ora homes is underway, with the first 17 homes complete on Glass and Nash Roads, with customers now settled in. The first market and affordable homes for Waikōwhai are now in the design phase and construction is due to begin in 2025.

## Stage 2

Old Kāinga Ora homes that are no longer fit for purpose have been removed or relocated. LEAD Alliance is well underway with land remediation and civil works, which will continue until Q3 2024.

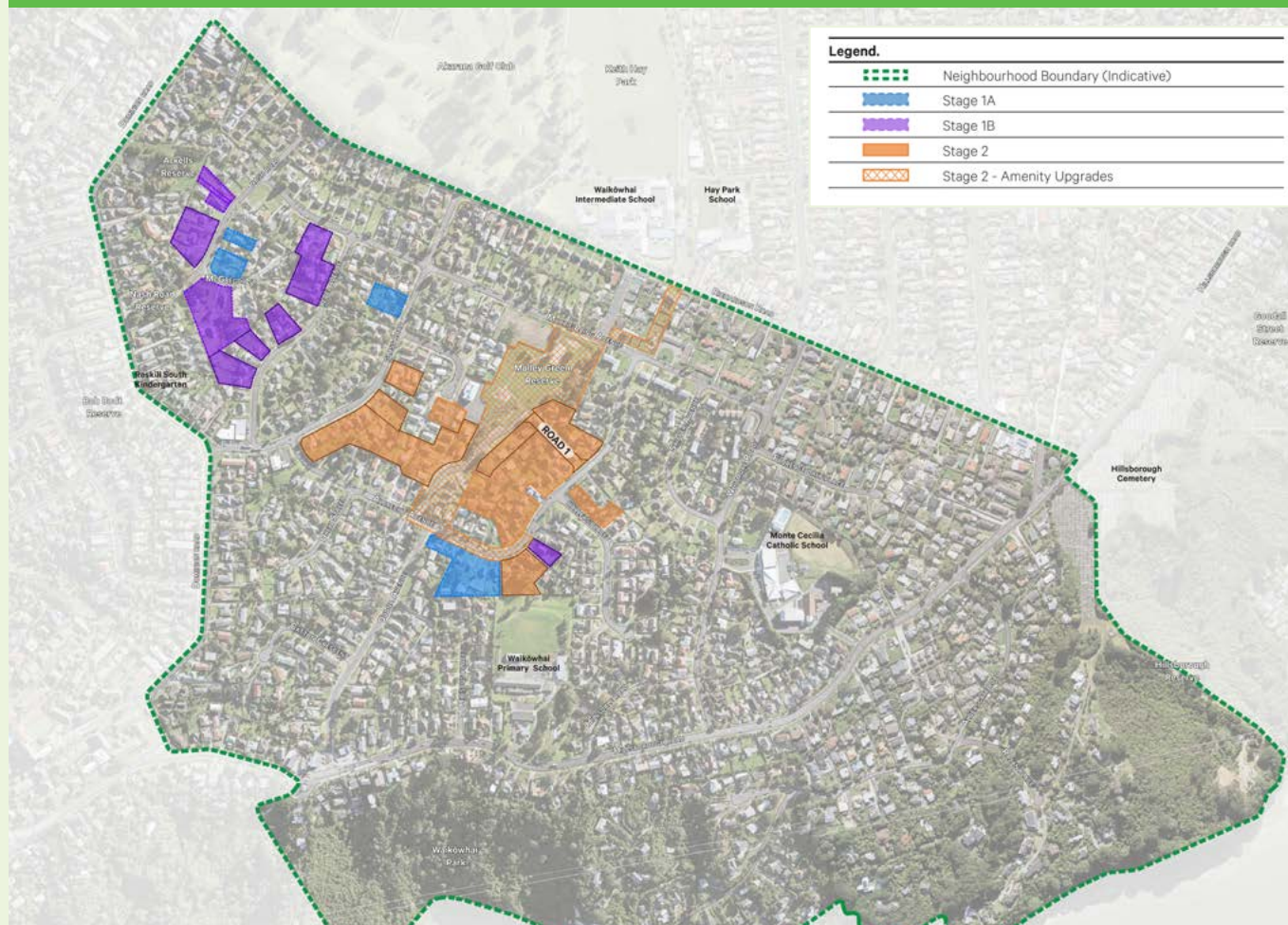
Waikōwhai is one of several neighbourhoods set to grow as part of the Roskill Development, which is delivering around 12,000 new homes. In Waikōwhai, we're building around 1,200 new, warm, dry, healthy homes – a mix of social homes and homes for sale at market and more affordable prices.

To learn more about what's happening in Waikōwhai, visit [roskilldevelopment.co.nz/neighbourhoods/waikowhai](https://roskilldevelopment.co.nz/neighbourhoods/waikowhai)

### Proposed homes in Stages 1 and 2

NEW HOMES*	STAGE 1	STAGE 2
SOCIAL	18	8
MARKET	102	175
<b>TOTAL</b>	<b>120</b>	<b>183</b>

\* Approximate numbers only. We will provide updates if there are any changes to the plans.



## ESTIMATED DEVELOPMENT TIMELINE

### Winter 2024

- » Stage 2 infrastructure civil works (excluding McKinnon St area) and land remediation completed.
- » Stage 3 and 4 design phase to begin.
- » Construction of the Molley Green Reserve upgrade continues.

### Spring 2024

- » More social homes to commence construction.
- » Stage 2 civil works due to be completed.
- » Construction of the Molley Green Reserve upgrade continues.

### Summer 2025

- » More social housing completed.
- » Molley Green Reserve upgrade completed.
- » Construction of first market and affordable homes due to begin.
- » Works on playground upgrade in Molley Green Reserve commence.

### Autumn 2025

- » Construction of more market and affordable homes continues.
- » Playground area in Molley Green Reserve completed.



# MOLLEY GREEN RESERVE UPGRADE UPDATE

The Molley Green Reserve upgrade is now underway and is due for completion in December 2024.

Some key features that have been completed include the new extension of Molley Green Place, new streetlights and the in-stream features within the daylighted stream. Construction of the bridge structures and landscaping has now begun, and the installation of much needed new public toilets is underway.

The basketball court will remain closed until December to allow for the remainder of the upgrade works. The footpath through the reserve between Gerbic Place and Molley Green Place will be closed, but access to Tā Tātou Māra Kai, Waikōwhai's community garden will remain open via Morrie Laing Avenue.

**We're excited for the upgrades coming to this much-loved local amenity - here's some of what the new design includes:**

- » Viewing area to celebrate Te Auaunga's emergence
- » New stormwater infrastructure to enable more flood detention capacity in the reserve
- » Stream interaction area and viewing platform
- » New pathway and boardwalk for pedestrians and cyclists
- » Places for local fauna and flora to grow
- » More areas for the community to gather, share, cook, and grow kai
- » More play areas, basketball area and pump track
- » The joining-up of māra hūpara (natural playground)
- » Realignment of Molley Green Place with parallel car parks, street trees and planting



**Molley Green Community Day**  
21 September, 11am - 3pm,  
Waikōwhai Intermediate School

A whānau fun day for the whole community. There'll be games and activities for all ages - including bouncy castles, face painting, kai and performances.

The Roskill Development team will be there, come say hi and find out more about what's happening in your neighbourhood.

**See you there!**



**Grab your gloves and head down to Tā Tātou Māra Kai, the community garden and food forest in Molley Green Reserve!**

Join free garden sessions every Tuesday, 9am - 12pm, Molley Green Reserve (access via Morrie Laing Ave). To get involved, follow Friends of Molley Green on Facebook for more details on upcoming events!



## IN THE MEANTIME

Our team will hold a range of community events at nearby parks while the work is underway. To keep up to date, follow us on [facebook.com/roskilldevelopment](https://www.facebook.com/roskilldevelopment)

**While the reserve is being upgraded, enjoy the amenities at nearby parks:**

- » Keith Hay Park (playground, half court, cycle / walking path, dog friendly)
- » Freeland Reserve (walking/cycling path, BBQ / picnic area, dog friendly)
- » Turners Reserve (bike track, playground, basketball court)
- » Margaret Griffen Park (playground, half court, walking loop trail, dog friendly)
- » Molley Green Food forest

## GET IN TOUCH

If you have any questions or concerns about the work that is underway, please contact our team at LEAD Alliance.

**Tai Kainiu - Community Liaison Advisor**

**021 451 013 | 0508 7474 8244 | [waikowhai@leadalliance.nz](mailto:waikowhai@leadalliance.nz)**



## EMBRACING COMMUNITY AND TRANSFORMATION: **ROSITA'S JOURNEY AT KĀINGA ORA**

*With more than 35 years dedicated to public service, Rosita Ekeroma has made a significant contribution to our work providing homes for Kiwis who need them. Here, she shares some of her experiences.*

Talofa lava and warm Pacific greetings to all! My name is Rosita Ekeroma, and I've had the privilege of serving as Team Leader for the Tenant Rehousing team at Kāinga Ora for the past 11 years. I have spent a total of 35 years dedicated to various roles within our organisation.

Throughout my tenure, I've witnessed significant transformation within Kāinga Ora redevelopment programmes, particularly in response to major events like the Christchurch earthquake. Leading efforts to relocate approximately 150 families affected by this devastating disaster remains one of the most memorable experiences of my career. We worked tirelessly to ensure these families found safe and warm homes in challenging circumstances.

Over the years, our approach has evolved to better support our customers. Our team has worked hard in engaging with our communities, ensuring their voices are heard and their concerns addressed. Today, I am proud to see thriving communities and happy tamariki enjoying the homes we've helped to rebuild and enhance.

My role primarily involves leading and motivating my team to achieve the best

housing outcomes for our customers. We work closely with various support networks, whānau, and government agencies to ensure each customer's unique needs are met, whether they require new accommodation due to redevelopment, overcrowding, or specific health and social needs.

One of the most rewarding aspects of my job is hearing the stories of our customers – stories of resilience, community spirit, and growth. I've spoken with long-term customers who were the first to move into their street, who planted fruit trees to share with their neighbours that are now mature. It's hearing their stories that makes me the most proud of the work we do here at Kāinga Ora.

Our placement team collaborates closely with us to ensure swift and appropriate housing solutions for our customers. This partnership is crucial in managing large-scale projects effectively, prioritising those most affected by redevelopment initiatives.

We engage actively with stakeholders, community leaders, and local organisations to foster understanding and support for our projects.

This collaborative approach has been instrumental in achieving positive outcomes and building lasting relationships within the communities we serve.

*One policy close to my heart is the "choice to return," which allows customers relocated during redevelopment to return to their community if they wish. This policy embodies our commitment to respecting the ties individuals have to their neighbourhoods and ensuring they feel supported throughout the relocation process.*

I am honoured to be part of an organisation that prioritises our communities. As we continue this journey, I look forward to further enhancing our neighbourhoods and supporting our customers in building brighter futures.





# WAIKŌWHAI COMMUNITY VIEWS NEW SOCIAL HOMES

*The Waikōwhai community came together recently for a glimpse into some of the neighbourhood’s new social housing.*

Located at 2 McGregor Street, the event hosted by Kāinga Ora and Roskill Development teams drew locals to explore the new two- and three-bedroom homes.

With coffee and morning tea provided, the gathering was also a chance to discuss the upgrades currently underway in Molley Green Reserve. Those who viewed the homes were impressed by their accessibility and convenience to local services and amenities, as well as plenty of parking available for Kāinga Ora customers.

“It was great to be able to showcase these beautiful homes to our community before Kāinga Ora customers move in,” says Karla Beazley, Community Development and Engagement Coordinator.

“We were even able to help refer someone to our housing team so they could make an application for a Kāinga Ora home.”





# MAGNIFICENT MATARIKI

Check out these snaps of some of the magnificent Matariki celebrations that happened across Roskill Development!



## WANT TO KNOW MORE OR GET IN TOUCH?



### INFORMATION CENTRE, 142 MAY ROAD OPEN WEDNESDAY – SATURDAY, 10AM – 4PM

Pop in for an in-person chat, or book an appointment in advance using the contact details below. Our friendly Info Centre team is also available on live chat via the website.

- » Phone: (09) 953 8206
- » Website: [roskilldevelopment.co.nz](https://roskilldevelopment.co.nz)
- » Email: [info@roskilldevelopment.co.nz](mailto:info@roskilldevelopment.co.nz)
- » Facebook: [facebook.com/roskilldevelopment](https://facebook.com/roskilldevelopment)
- » E-newsletter: **Subscribe to our latest updates by visiting the website or sending us an email**



### KĀINGA ORA CUSTOMERS

If you are a Kāinga Ora customer and have rehousing or customer-related questions, please contact the Customer Liaison Team on 0800 801 601



### LAYING THE GROUNDWORK

LEAD Alliance is our civil works partner. They prepare the land, remove existing social homes that are no longer fit for purpose, and upgrade streets and infrastructure before building starts. For any questions about civil works please contact LEAD Alliance on 0508 747 48 244.