



WAIKŌWHAI

PROGRESS UPDATE

Spring 2023

WAIKŌWHAI WELCOMES NEW HOMES

Wet weather couldn't stop more than 60 people checking out the first new Kāinga Ora homes in the Waikōwhai neighbourhood, as part of the Roskill Development.

KIA ORA!

Welcome to the Spring 2023 edition of your Waikōwhai Progress Update. Turn to page two to read about the latest development progress and plans. On page three, you can read all about the project that's just kicked off to redevelop the much-loved Molley Green Reserve, to help restore Te Auaunga (Oakley Creek), future-proof the area against flooding, and add new and improved play and leisure features for the community.

Armed with free coffee and a sausage sizzle, neighbours and other visitors toured two new homes – a five-bedroom standalone home and three-bedroom duplex – in Glass Road on Saturday, 8 July.



Five homes have been built on the site in total, delivered by Kāinga Ora build partner Precision Construction for Kāinga Ora customers. These include three-bedroom homes, duplexes (where a house shares an external wall with one other) and one five-bedroom home. The site also includes a three-plus one-bedroom home which includes a self-contained ground level unit with its own entrance.

More than a dozen different kinds of trees have been planted throughout the site, and each has its own parking space and outdoor area. All homes were built to 6 Homestar standards, making them warmer and drier, and safe and comfortable for generations to come.

“These homes are absolutely beautiful. I wish I had one,” said a visitor. “Lucky whānau who get to live here.”

Said another: “My kids don't want to leave. They wish this was their house!”

The Roskill Development team and Kāinga Ora Community Engagement and Housing Support teams were on site to answer questions and chat with the community about the homes and upcoming plans for the area.

WAIKŌWHAI NEIGHBOURHOOD PROGRESS UPDATE

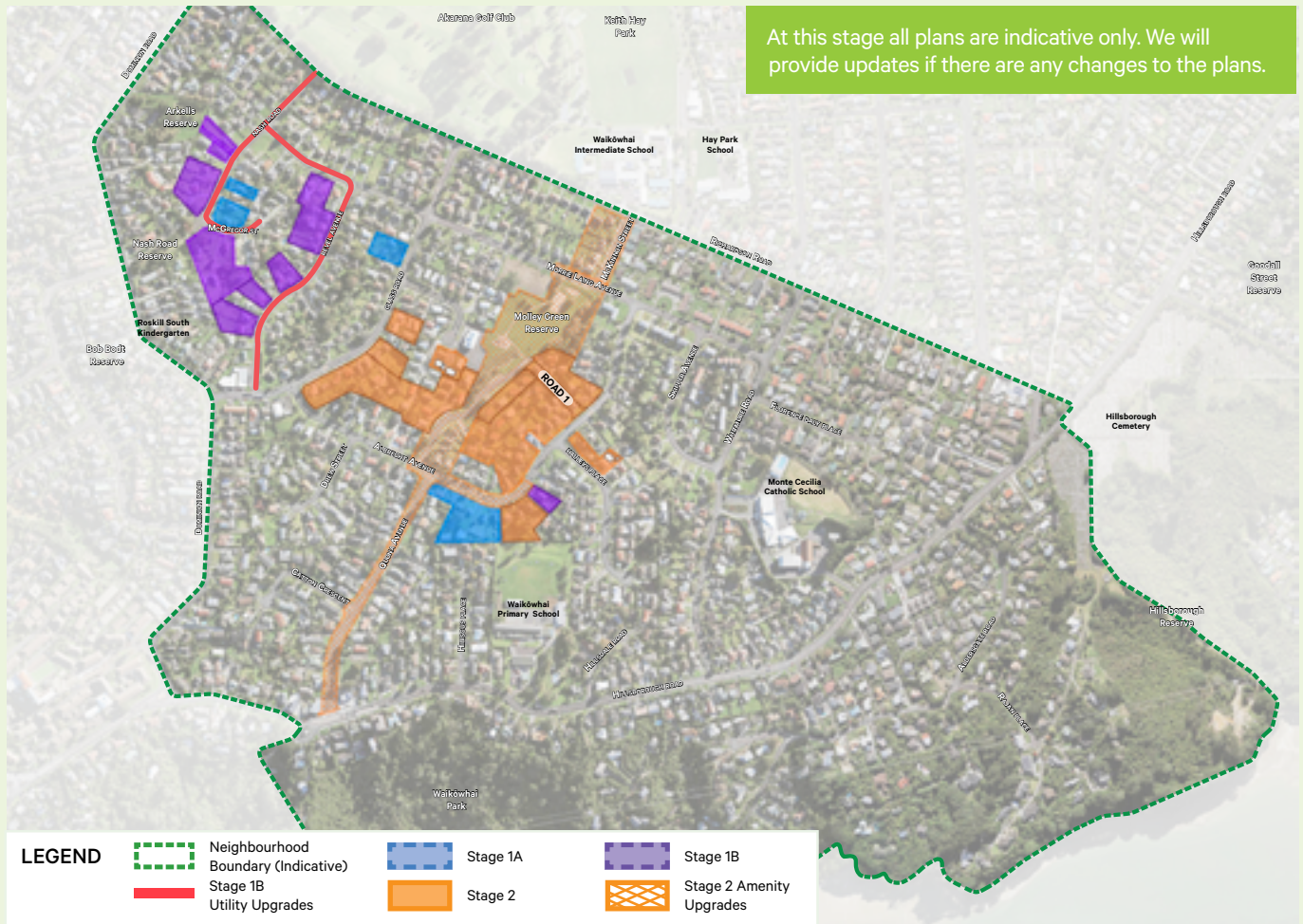
Waikōwhai is one of several neighbourhoods set to grow as part of the Roskill Development, which is delivering 11,000 new homes. In Waikōwhai, we're building around 1,200 new, warm, dry healthy homes – a mix of state homes and homes for sale, at market and more affordable prices, such as KiwiBuild.

Stage 1

Stage 1A state housing construction is underway, with the first eight state homes now complete on Glass and Nash Roads, and Kāinga Ora customers now settled in. A further 29 state homes are due to be completed by October 2024. Stage 1B civil works are now complete. Stage 1 market and affordable housing is now in design and will commence construction mid 2024.

Stage 2

Removal of old houses no longer fit for purpose and relocations are well underway. LEAD Alliance has started land remediation and civil works, which will continue until Q3 2024. Construction of the Molley Green Reserve upgrade is now underway – read more on page 3.



ESTIMATED DEVELOPMENT TIMELINE

Spring 2023

An additional 29 Stage 1 state homes start construction. Stage 2 land remediation and civil works continue (excluding McKinnon Street area). Molley Green Reserve upgrade works get underway.

Summer 2023 / 2024

Eight more Stage 1 state homes completed. Stage 2 house relocations and removals complete.

Autumn 2024

First Stage 1 market homes civil works start. All Stage 1 state homes completed. Stage 2 infrastructure civil works (excluding McKinnon St area) and land remediation continues. Molley Green Reserve upgrade (and Albrecht Basin) continues.

Winter 2024

Stage 2 infrastructure civil works (excluding McKinnon St area) and land remediation complete. Molley Green Reserve upgrade (and Albrecht Basin) complete.

While Molley Green Reserve is temporarily closed, check out nearby Keith Hay Park and Arkells Reserve.



MOLLEY GREEN RESERVE UPGRADE

Molley Green Reserve is closed from September 2023 until the end of 2024, to allow our partner, LEAD Alliance, to carry out some important upgrades.

The community will still have access to the basketball court until January 2024, and access to the community gardens will remain throughout the entire upgrade. Pedestrian access through the reserve will remain in place until mid-November. Our team will be holding a range of community events at nearby neighbourhood parks while this work is underway. To keep up to date, follow us on Facebook at facebook.com/roskilldevelopment.

THE VISION FOR MOLLEY GREEN

“Celebrating Te Auaunga and Waikōwhai through the heart of Molley Green Reserve and providing recreational and educational features for the local community to enjoy.”

Incorporating feedback from the community, we worked with our mana whenua partners, Puketāpapa Local Board Healthy Waters, Parks & Community Facilities, Auckland Transport and Auckland Council, Isthmus and LEAD Alliance to develop a set of key design moves for Molley Green Reserve.

The new design includes:

- Helping to restore Te Auaunga (Oakley Creek)
- More flood detention capacity in the reserve

- A new pathway that connects with Te Auaunga
- Places for local fauna and flora to grow
- More areas for the community to gather, share, cook, and grow kai
- More playground and basketball area and joining-up māra hūpara (natural playground)
- Plus, so much more!

Sign up for email updates at roskilldevelopment.co.nz to stay up to date with the latest progress updates on the development in Waikōwhai.

TIMELINE OF MOLLEY GREEN RESERVE UPGRADE

2022

- » Information sessions were held with the community to provide regular progress updates.
- » The community, mana whenua and key stakeholders were invited to share their ideas about how to make Molley Green Reserve an even better place for the community to gather, relax and play. This helped shape the planned upgrades coming to this much-loved local amenity.
- » A community event was held at Molley Green Reserve to share the endorsed design.

2023

- » Enabling works for new waste water pipes begins September 2023.
- » Access to basketball court will remain until January 2024.
- » Access to community gardens will remain throughout the upgrades.

2024

- » Basketball court will close January 2024 to allow for the remainder of the upgrade works.
- » Access to community gardens will remain.

At this stage, the plans for Molley Green Reserve are indicative only and subject to consents being granted. We will provide updates if there are any changes to current plans.

MEET VIKKI COTTINGHAM

Assistant Development Manager



What do you love most about the Waikōwhai community?

Resilience and manaakitanga. Waikōwhai, like many other areas in Puketāpapa, has been through a lot. It's incredibly humbling to see how everyone takes care of this community, and I'm looking forward to getting to know the Waikōwhai locals better as we all work together for the neighbourhood.

What were you doing previously?

I've worked in the Roskill Development Team for more than five years, starting as a team coordinator. Joining the team was a really interesting and challenging opportunity, which is nothing new as I've had a pretty colourful career! I have worked in the music industry, film and television and automotive, to name a few. Most of my roles were based on helping all sorts of people, managing offices, and entertainment and events. I even worked as a drama teacher for a while, which was really cool.

What do you like doing outside of the office?

I love to travel and am often over the ditch visiting family in Australia. I also enjoy a good old-fashioned Kiwi road trip, exploring our beautiful whenua. I have lived under the gorgeous Waitakere Ranges all my life so I'm spoiled for choice close to home, too! I'm a very proud Mum and Nanny, so whānau is a big part of my life. My granddaughter is a 7-year-old ball of sassy energy, hilarity and kindness. We share a love of books, music, games, popcorn movie nights and generally being goofballs together. I have a fur-baby, Nixy, who is my best bud, and I'm a member of the Sing Creative Choir – we've entered into the World Choir games in Tāmaki Makaurau in 2024, so wish us luck!

What does your role involve?

Being an Assistant Development Manager is super varied and busy! Not only do I work very closely with our team on overall project delivery, I have the privilege of collaborating with our iwi, community-based teams, LEAD Alliance and build partners. It's the best of all worlds – I meet amazing people and am constantly learning.

What do you enjoy most about your job?

I really enjoy interacting with our communities, especially tamariki. It's exciting to see them enjoy the new and improved spaces we have planned for their neighbourhood and I love seeing whānau enjoy their new, healthy homes. I'm very proud and immensely grateful for the opportunity to do the mahi we do for our communities, and to work with an amazing, hard-working and loyal team

TRACKING WELLBEING IN WAIKŌHAI

Te Hotonga Hapori – Connecting Communities are kicking off a five year research study in Waikōwhai to understand how living in a neighbourhood that is being redeveloped affects people's wellbeing. They'll be using next-generation research technologies to track this over time.

Eligible households in Waikōwhai will receive a letter inviting them to be part of it. Locals who participate will complete a wellbeing survey about how they feel about their community and neighbourhood spaces. They'll each receive a \$50 voucher for their time and effort.

For more information about who is eligible and on how to participate, go to tehotongahapori.ac.nz or call **0800 553 365**.



PIRITAHİ HAS A NEW NAME

Our civil works partner, Piritahi, has been renamed to LEAD Alliance – which stands for Land Enablement and Delivery.

LEAD Alliance is a group of companies with skills and experience to lead design and construction of infrastructure of New Zealand's largest urban development programme, including here in Waikōwhai. The alliance delivers an infrastructure and civils programme on behalf of Kāinga Ora that will enable many new homes across Auckland.



WANT TO KNOW MORE OR GET IN TOUCH?

**INFORMATION CENTRE,
142 MAY ROAD**

**OPEN WEDNESDAY – SATURDAY,
10AM – 4PM**

Pop in for an in-person chat, or book an appointment in advance using the contact details below. Our friendly Info Centre team is also available on live chat via the website.

- » Phone: (09) 953 8206
- » Website: roskilldevelopment.co.nz
- » Email: info@roskilldevelopment.co.nz
- » Facebook: [facebook.com/roskilldevelopment](https://www.facebook.com/roskilldevelopment)
- » E-newsletter: **Subscribe to our latest updates by visiting the website or sending us an email**



KAĪNGA ORA CUSTOMERS

If you are a Kāinga Ora customer and have rehousing or customer-related questions, please contact the Customer Liaison Team on **0800 801 601**



LAYING THE GROUNDWORK

LEAD Alliance is our civil works partner. They prepare the land, remove existing state homes and upgrade streets and infrastructure before building starts. For any questions about civil works please contact **LEAD Alliance on 0508 747 48 244**.



**Roskill
Development**
Waikōwhai