



# WAIKŌWHAI

## PROGRESS UPDATE

### AUTUMN 2023

## KIA ORA!

Welcome to the Autumn 2023  
Waikōwhai Progress Update.

Inside, you'll find all the latest about what's happening in your neighbourhood, including community news and a development progress update. If you've got questions or feedback, we'd love to hear from you – our contact information is on the back page.

## MOLLEY GREEN RESERVE UPGRADES ARE UNDERWAY

*Local children participate in the Māra Hūpara  
playground design for Molley Green Reserve*

Molley Green Reserve is a beautiful part of the Waikōwhai neighbourhood, and Kāinga Ora is in the process of upgrading it so that more people can enjoy the space. The upgrade includes Māra Hūpara, a natural playground/ learning space that will provide opportunities for the community to engage with the natural environment.



Ākonga (learners) from Hay Park School and Waikōwhai Intermediate School were invited to take part in a one-day workshop, which took place on 21 February 2023, with teacher and Māori games expert, Harko Brown, who is designing the Māra Hūpara playground in collaboration with Mana Whenua.

The ākonga played traditional Māori games and had the opportunity to give feedback on the designs for the playground. Some kai was provided to keep the tamariki energised.

Now, the Māra Hūpara playground designs are being further developed based on the children's feedback. Updated designs will be presented to Mana Whenua, and then shared with Hay Park School and Waikōwhai Intermediate School for another round of feedback in Term 2 this year.

**Watch this space for new updates on the Molley Green Reserve upgrade.**



## COMMUNITY FEEDBACK INFORMS THE MOLLEY GREEN RESERVE UPGRADES

*The plan for Molley Green Reserve is to enhance and enrich the existing amenities and infrastructure so that the communal green space can be used by everybody, all year round.*

We've been working alongside the local community, Mana Whenua, Auckland Council's Healthy Waters, Auckland Council Parks, Auckland Transport, Piritahi, Isthmus, and the Puketāpapa Local Board to ensure the upgrades create a space that's functional, practical and beneficial to the community.

The Waikōwhai community is at the heart of the project, so we've worked with them often to hear their thoughts and ideas. We've held events to help us understand how the space is used, or why some of the community don't use it. We asked what the community likes about the reserve, what they think needs improvement, and what stories could be reflected in the park.



The feedback was incorporated into the redesign of Molley Green, and a draft concept plan was submitted and approved by the Local Board. The draft concept was then shared with the community at an event at Molley Green Reserve, which was a great chance for the team to capture any additional feedback before a final plan was prepared.

While at the event, the community enjoyed a scavenger hunt where they got to fully explore Molley Green Reserve, and signposts with pens were set up to capture further ideas and feedback.

It was great to chat with the community about the exciting upgrade which should begin this coming summer – we'll be sure to keep you updated along the way!



## MOLLEY GREEN COMMUNITY DAY HIGHLIGHTS

*The Molley Green Community Day is a whānau-friendly event full of music, food and fun. This year, it happened on March 18, hosted by Roskill South Oasis Hub in collaboration with other local community groups.*

The Roskill Development team and our civil works partner Piritahi were there talking to the community about new homes, infrastructure, and amenities coming to the neighbourhood, as well as the Molley Green Reserve upgrade plans.

The teams supported local tamariki with building cubby houses. The kids were amazing little builders, and got to use drills and other tools thanks to the team from Bunnings Mt Roskill, who donated the material used.



Two lucky local whānau won the cubby houses, and the Roskill Development

and Piritahi teams delivered them to their new Waikōwhai homes.

The Roskill Development team also had the privilege of meeting Molley Green's daughter, Suzanne Kop, and granddaughter. Here they are with Rose Cosgrove, Kāinga Ora's Stakeholder Relationship Manager.

This was the first event in a few years, due to Covid-19 restrictions, so it was great to see the community come together again. Thankfully, there wasn't much rain and the sun shone through the clouds.



## WAIKŌWHAI DEVELOPMENT PROGRESS UPDATE

### Stage 1

Stage 1A state housing construction is underway, with the first state homes to be completed in Q4 2023. Stage 1B civil works are now complete.

Unfortunately, there have been some delays with getting our build partners on the Stage 1 sites. This is partly due to the challenges of working with the sloping land and consenting processes. We hope to see activity on the sites later this year / early next year.

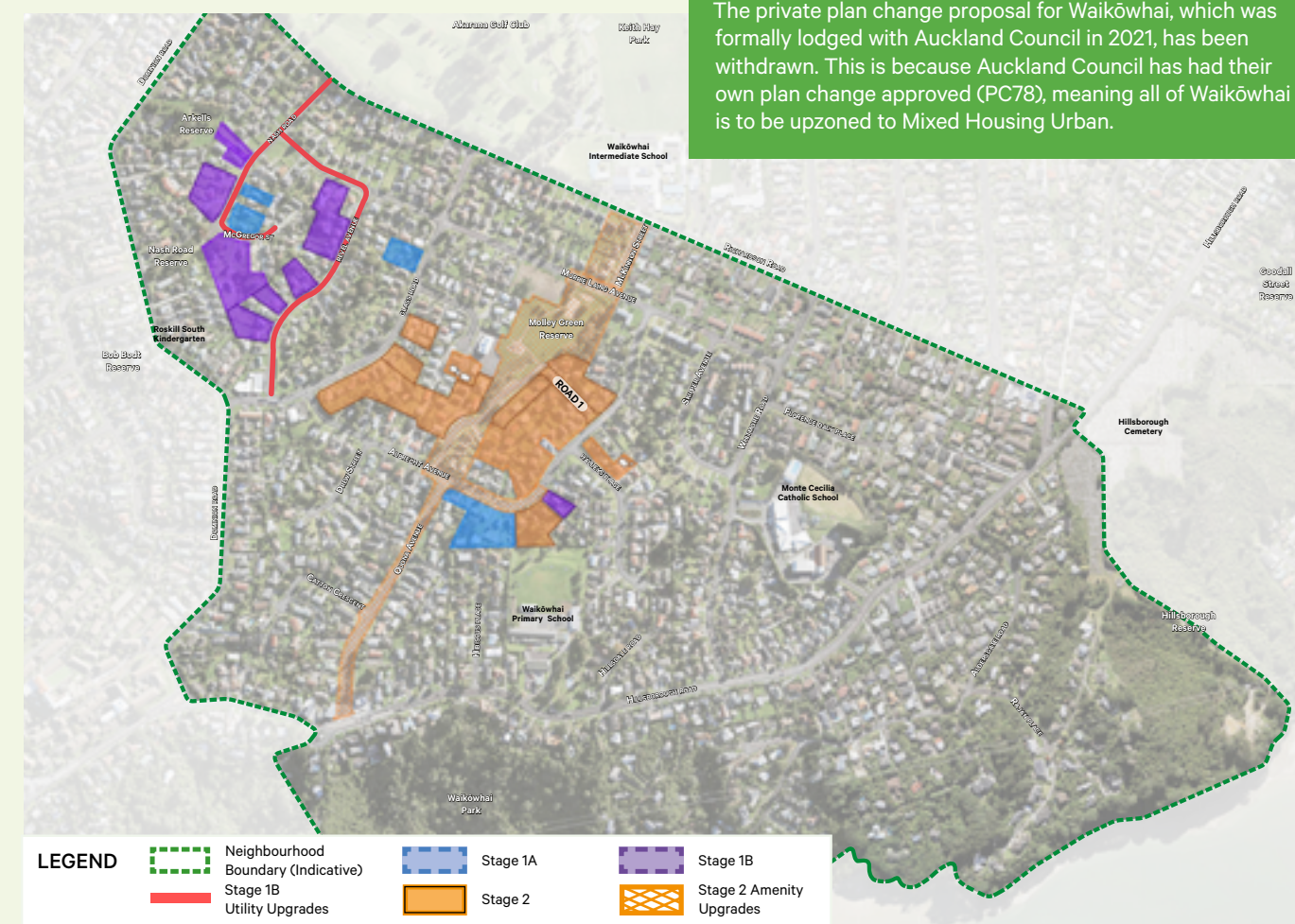
The formal land sales process for the remainder of stage 1 and 2 market sites is currently underway.

### Stage 2

Piritahi has started demolition and relocation of existing state homes. Stage 2 design is underway and enabling works commenced in Q1 2023. Construction of the Molley Green Reserve upgrade is to begin in Q4 2023.

### Plan Change Update

The private plan change proposal for Waikōwhai, which was formally lodged with Auckland Council in 2021, has been withdrawn. This is because Auckland Council has had their own plan change approved (PC78), meaning all of Waikōwhai is to be upzoned to Mixed Housing Urban.



## MOLLEY GREEN RESERVE REDEVELOPMENT / UPGRADE TIMELINE

### Summer 2021 / 2022

- Community consultation phase, where Kāinga Ora:**
- » Held information sessions and sent out community updates on progress.
  - » Provided the opportunity for community members to take part in a survey.
  - » Engaged with schools to ensure the youth voice is heard.
  - » Held meetings with key stakeholders and community groups.

### Autumn / Winter 2022

- » Final design completed and endorsed by the Puketāpapa Local Board.

### Spring 2022

- » A community event was held at Molley Green Reserve to share the endorsed design.

### Summer 2022 / 2023

- » Working on Māra Hūpara opportunities for the reserve.

### Summer 2023 / 2024

- » Construction is estimated to commence.



Molley Green Place will be temporarily closed from June 2023 until the end of 2024. This means that our civil works partner, Piritahi, can proceed with land remediation and infrastructure works safely. Pedestrian access through Molley Green Place will remain in place until the end of July. We will keep you updated on the construction progress along the way.



## MEET TAI KAINIU

Community Liaison Advisor – Piritahi



### What does your role involve?

Community Liaison Advisors (CLA) are the first point of contact between stakeholders in the community and the construction teams. We develop and maintain good quality community engagement by being the community voice, prioritising their wellbeing and ensuring they are informed and feel respected, while supporting the construction team to complete works with as little inconvenience to residents as possible.

### What do you enjoy most about your job?

Connecting with the community and building trust to open up communication to flow in both directions. I especially love hearing about community history from families who have lived in the neighbourhood for generations. What a privilege it is to be trusted with their stories!

### What do you love most about the Waikōwhai community?

I love the Waikōwhai community's rich culture, diverse demographics and sense of pride.

### What were you doing previously?

I worked for almost 10 years in the communications/complaints resolution space for Air NZ prior to doing a similar role for a year with Downer NZ. Seeing the impact of Covid in our community post-lockdown while volunteering with my family in a community soup kitchen sparked a deep desire to work in the community space and here I am!

### What do you like doing outside of the office?

I can lose myself in a good book, I'll say yes to any cultural music and dance event, love a good market or festival and value making memories with my husband, children and family.



## MEET ROSE COSGROVE

Stakeholder Relationship Manager,  
Kāinga Ora – Homes and Communities

### What does your role involve?

As a Stakeholder Relationship Manager I engage with a diverse group of people such as community groups, local businesses and local residents in order to support the delivery of new homes, infrastructure and amenities coming to the neighbourhood. I have found that giving people the opportunity to be heard and involved often leads to more positive outcomes.

### What do you enjoy most about your job?

Working with diverse people, seeing many happy faces moving into lovely, new, warm homes.

### What do you love most about the Waikōwhai community?

A lot of friendly whānau, lots of children playing around the neighbourhood and old homes being replaced by new, dry, warm homes.

### What were you doing previously?

I was previously a Funding and Contracting Employee with Te Whānau o Waipareira Trust and supporting Pacific Island Businesses with Government Adaptation Grants to help them survive through the COVID Pandemic.

### What do you like doing outside of the office?

I love dining and dancing. I enjoy catching up with friends and whānau, travelling and trying new things.

## WANT TO KNOW MORE OR GET IN TOUCH?

**INFORMATION CENTRE,  
142 MAY ROAD**

**OPEN WEDNESDAY – SATURDAY,  
10AM – 4PM**

Pop in for an in-person chat, or book an appointment in advance using the contact details below. Our friendly Info Centre team is also available on live chat via the website.

- » Phone: (09) 953 8206
- » Website: [roskilldevelopment.co.nz](https://roskilldevelopment.co.nz)
- » Email: [info@roskilldevelopment.co.nz](mailto:info@roskilldevelopment.co.nz)
- » Facebook: [facebook.com/roskilldevelopment](https://facebook.com/roskilldevelopment)
- » E-newsletter: **Subscribe to our latest updates by visiting the website or sending us an email**



**KĀINGA ORA  
STATE HOUSING CUSTOMERS**

If you are a Kāinga Ora customer and have rehousing or customer-related questions, please contact the Customer Liaison Team on **0800 801 601**



**LAYING THE GROUNDWORK**

Piritahi is our civil works partner. They prepare the land, remove existing state homes and upgrade streets and infrastructure before building starts. For any questions about civil works please contact Piritahi on **0508 PIRITAHĪ** or email [info@piritahi.nz](mailto:info@piritahi.nz)



**Roskill  
Development**  
Waikōwhai