



MOLLEY GREEN FOOD FOREST

Waikōwhai locals have recently formed an EcoNeighbourhood group and started a Food Forest in Molley Green Reserve. Funded by Puketāpapa Local Board, the EcoNeighbourhood group aims to support local neighbourhood groups by working collectively on environmental passion projects. The Food Forest initiative is a space where communities can grow their own food and contribute to ongoing sharing and sustaining of cultural food knowledge, all while growing stronger community friendships.

Group coordinator Rowan Cant says, “through the garden, we are hoping that people have a central space to gather, meet neighbours, share skills, stories and recipes.” Kāinga Ora was honoured to support this initiative with garden beds and storage for the forest.

The Molley Green EcoNeighbourhood group welcomes anyone living locally who would like to volunteer. Check it out the next time you're in Molley Green and contact 'Friends of Molley Green' on Facebook if you'd like to get involved.



WHAT'S HAPPENING WITH THE TREES?

As the Waikōwhai neighbourhood undergoes development to improve housing quality, health and wellbeing of the community, increase in housing options, and improvement of local amenities — careful planning to ensure that protection and enhancement of Waikōwhai's urban ngahere is also being considered. Kāinga Ora has developed a strategy with mana whenua, utilising the Puketāpapa Local Board's Ngahere Action Plan and Auckland Council's Urban Ngahere Strategy. The strategy will offer guidance for the treatment of existing mature trees and new trees throughout the Waikōwhai neighbourhood. This includes working with the Molley Green Food Forest and transplanting existing healthy fruit trees into the park, along with the assessment of each tree in the neighbourhood and the recommendation if we can retain, transplant, remove due to health reasons or utilise the wood for another purpose.



TROPICAL TOUCH

Palm trees relocated to Waikōwhai Intermediate School

Five palm trees are thriving after being replanted in their new home at Waikōwhai Intermediate School, under the care of arborist Peter Whitehead. The mature trees were gifted to the school following removal from a nearby Kāinga Ora site which will be developed for state housing earlier this year.

Jenny Chilcott, who leads the Urban Ngahere Project at Kāinga Ora, says the aim is to increase ngahere coverage on Kāinga Ora properties and also work with other organisations to do the same. "This is a fantastic example of the Urban Ngahere Project in action – what can be achieved when we all work together to value and save trees."

Waikōwhai Intermediate School Principal David King says the students were surprised and delighted when they returned from the break. "You don't expect to have a fully grown palm in place where it was just grass previously. There were lots of questions about it. I could tell them that it came from the house across the road. The kids loved it. It is in their neighbourhood," David says.

To read more about how these huge trees were transported to Waikōwhai Intermediate and see the incredible video visit roskilldevelopment.co.nz/news

WAIKŌWHAI DEVELOPMENT PROGRESS UPDATE

Stage 1A

Kāinga Ora's Construction and Innovation arm (C&I) who delivers state housing, have lodged Resource Consents for 3 out of the 5 sites in stage 1A and are due to lodge Resource Consent for the other 2 sites later this year. This stage will aim to deliver approximately 41 state new, warm, dry homes.

Stage 1B

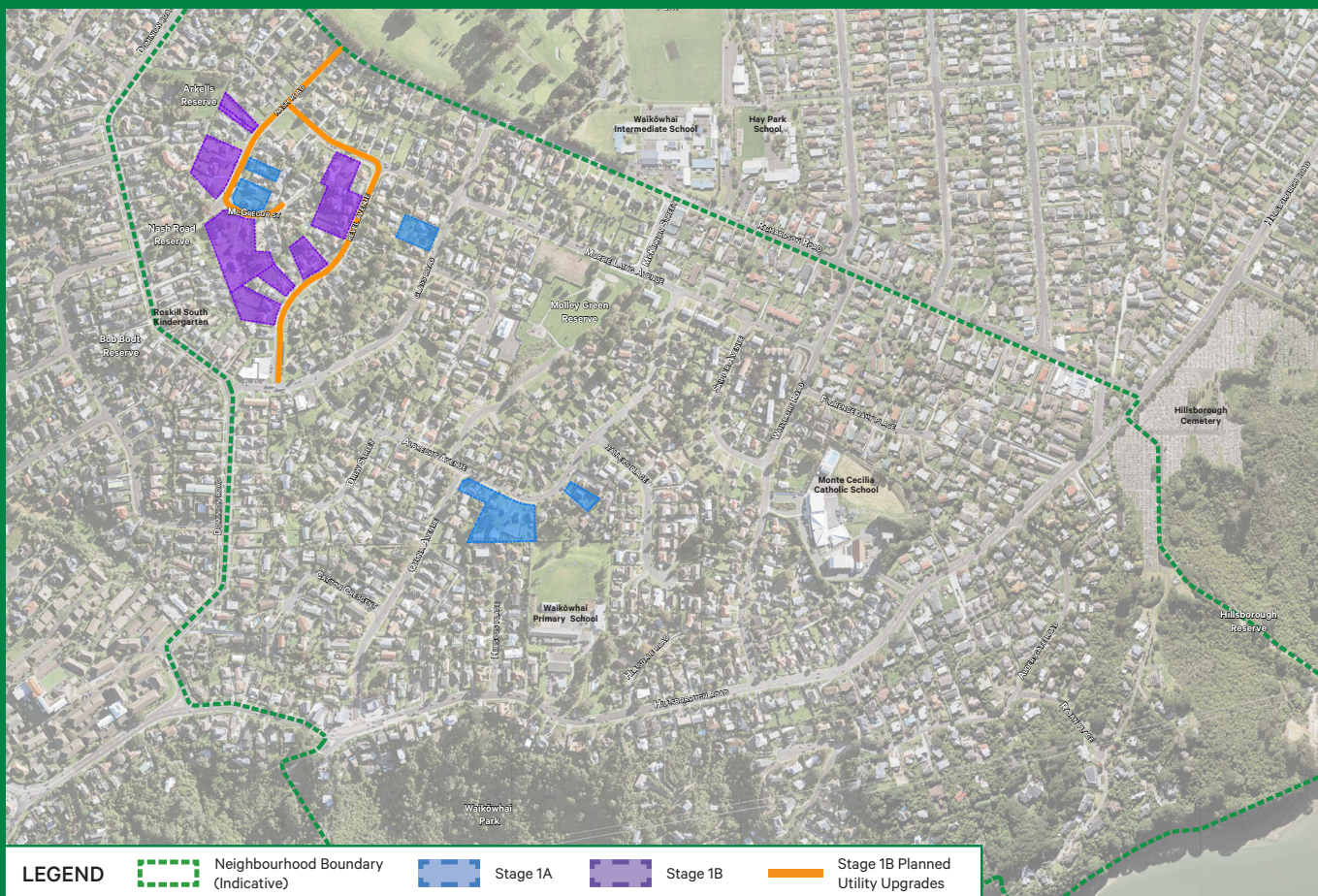
With lockdown restrictions easing, Piritahi are now back on-site during alert level 3 working under strict Covid-19 protocol and are progressing with clearance of sites, which includes the demolition and relocating of current homes. Stage 1B will deliver market houses including 50% affordable options.

Molley Green Reserve

Kāinga Ora have commenced design meetings for the potential upgrade of Molley Green Reserve with Auckland Council, Auckland Transport and mana whenua. We have heard from the community that Molley Green Reserve is the heart of Waikōwhai for many people, therefore we will be undertaking consultation with the community including schools to seek their input into the design.

Plan Change Update

The private plan change proposal for Waikōwhai was formally lodged with Auckland Council on 14 October. Auckland Council are in the process of reviewing the proposed plan change to ensure they are satisfied they have all the information required. We will keep you up to date on the progress in the New Year.



MOLLEY GREEN TIMELINE

Summer 2021 / 2022

Community consultation where Kāinga Ora will:

- » Hold information sessions and send out community updates on progress
- » Provide the opportunity for community members to take part in a survey
- » Engage with schools to ensure the youth voice is heard
- » Have meetings with key stakeholders and community groups

May 2022

- » Resource consent and design locked in
- » Kāinga Ora to report to community on final design

January 2023

- » Civil Construction estimated to commence

HAPPY HOLIDAYS

From the Roskill Development team

Happy holiday season to you and your whānau.

*Thank you for all of your support this year.
We will be taking a few days off after a busy
and challenging 2021 for us all.*

*The Mt Roskill Information Centre and Ōwairaka
Information Cube will be closing for a few days
on 23 December and reopening 5 January.*



WANT TO KNOW MORE OR GET IN TOUCH?


Roskill Development
PUT YOURSELF IN THE CENTRE

**INFORMATION CENTRE,
142 MAY ROAD**

**OPEN WEDNESDAY – SATURDAY,
10AM – 4PM**

The Roskill Development Information Centre is reopening on Monday 6 November with hygiene measures in place. The team will also be available by phone, email and live chat during normal opening hours: Wednesday – Saturday, 10am – 4pm.

- » Phone: (09) 953 8206
- » Website: roskilldevelopment.co.nz
- » Email: info@roskilldevelopment.co.nz
- » Facebook: [facebook.com/roskilldevelopment](https://www.facebook.com/roskilldevelopment)
- » E-newsletter: **Subscribe to our latest updates by visiting the website or sending us an email**


Kāinga Ora
Homes and Communities

**KĀINGA ORA
STATE HOME TENANTS**

If you are a Kāinga Ora customer and have rehousing or tenancy-related questions, please contact the Tenancy Liaison Team on **0800 801 601**


Piritahi
LAYING THE GROUNDWORK

LAYING THE GROUNDWORK

Piritahi is our civil works alliance. They prepare the land, remove old state homes and upgrade streets and infrastructure before building starts. For any questions about civil works please contact Piritahi on **0508 PIRITAHĪ** or email info@piritahi.nz


**Roskill
Development**
Waikōwhai